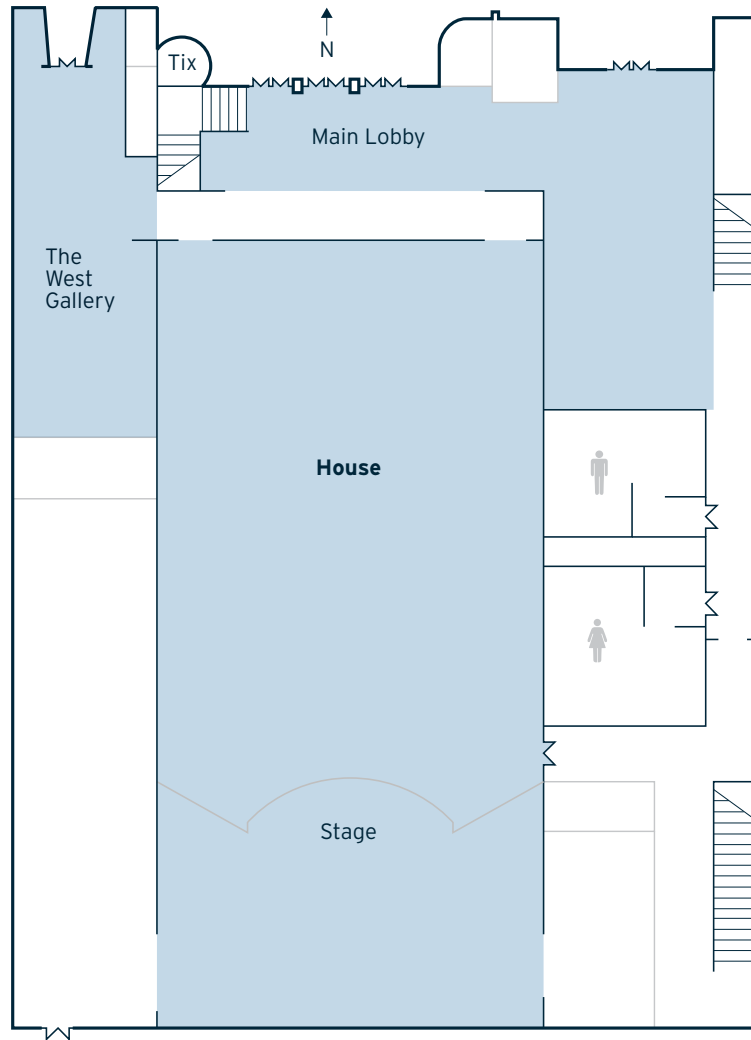


CAPACITY				
EVENT SPACE	TOTAL SQ FT	DIMENSION L X W	CEILING HEIGHT	HOUSE
Performance Hall	4130	-	-	421
Lobby	2669	-	-	75
Stage	1081	-	-	-

PRICING				
EVENT SPACE	COMMERCIAL	LOCAL COMMERCIAL	NON PROFIT	USU
Performance Hall	\$1500	\$1125	\$975	\$450
Lobby	\$300	\$225	\$195	\$90

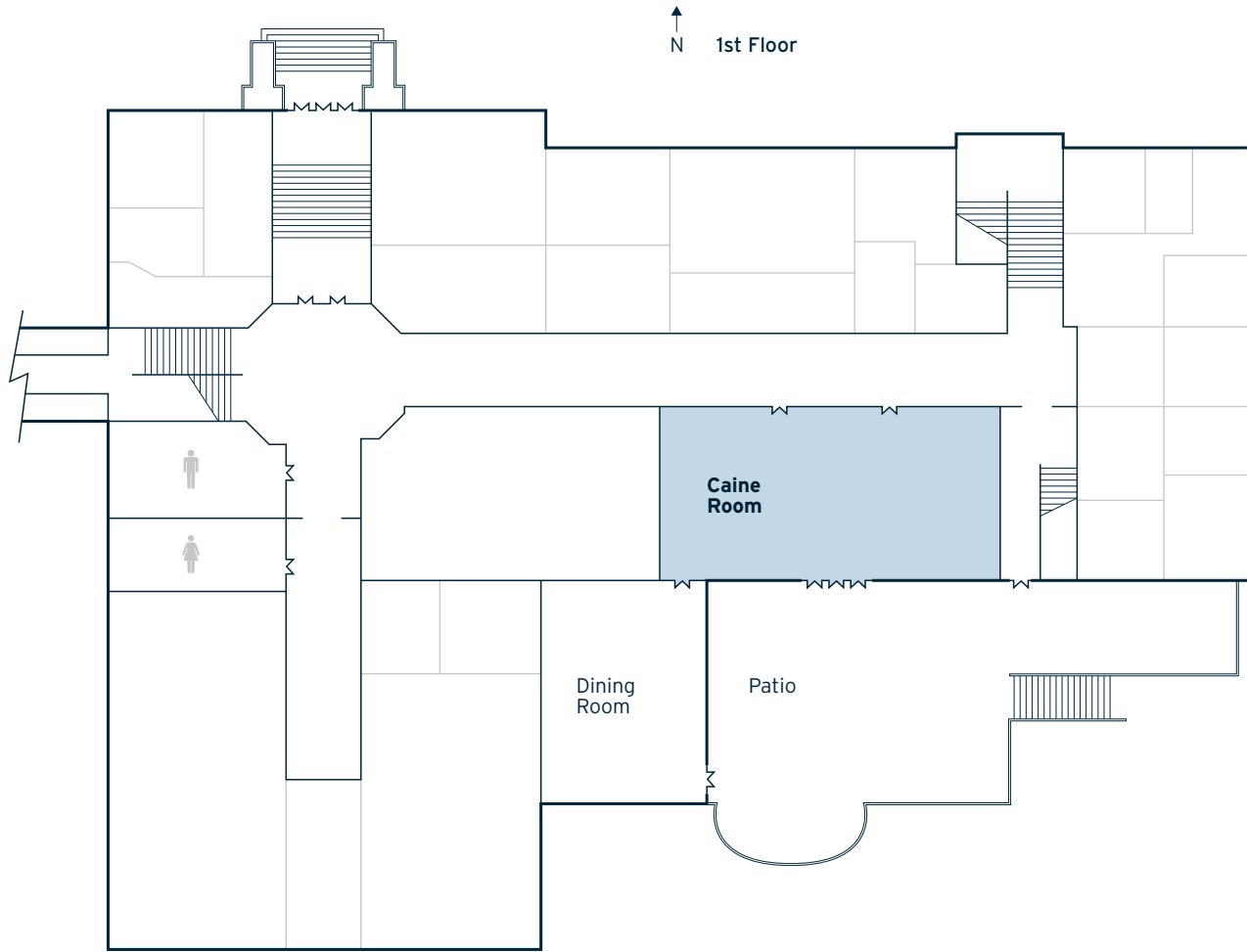
Procedures and rates are subject to change without notice.
 Utah State University reserves the right to alter services and fees based on the size and scope of the event.
 For scheduling and additional pricing information, please contact Sara Grove, CCA Production Services Scheduling Coordinator, at 435-797-3040 or sara.grove@usu.edu.



CAPACITY				
EVENT SPACE	TOTAL SQ FT	DIMENSION L X W	CEILING HEIGHT	HOUSE
Caine Lyric Theatre	-	-	-	378
Lobby	-	-	-	150
Stage	-	-	-	-
West Gallery	-	-	-	-

PRICING				
EVENT SPACE	COMMERCIAL	LOCAL COMMERCIAL	NON PROFIT	USU
Caine Lyric Theatre	\$800	\$600	\$520	\$240
Lobby	\$300	\$225	\$195	\$90
West Gallery	Call for Exhibition Rates			

Procedures and rates are subject to change without notice.
 Utah State University reserves the right to alter services and fees based on the size and scope of the event.
 For scheduling and additional pricing information, please contact Sara Grove, CCA Production Services Scheduling Coordinator, at 435-797-3040 or sara.grove@usu.edu.



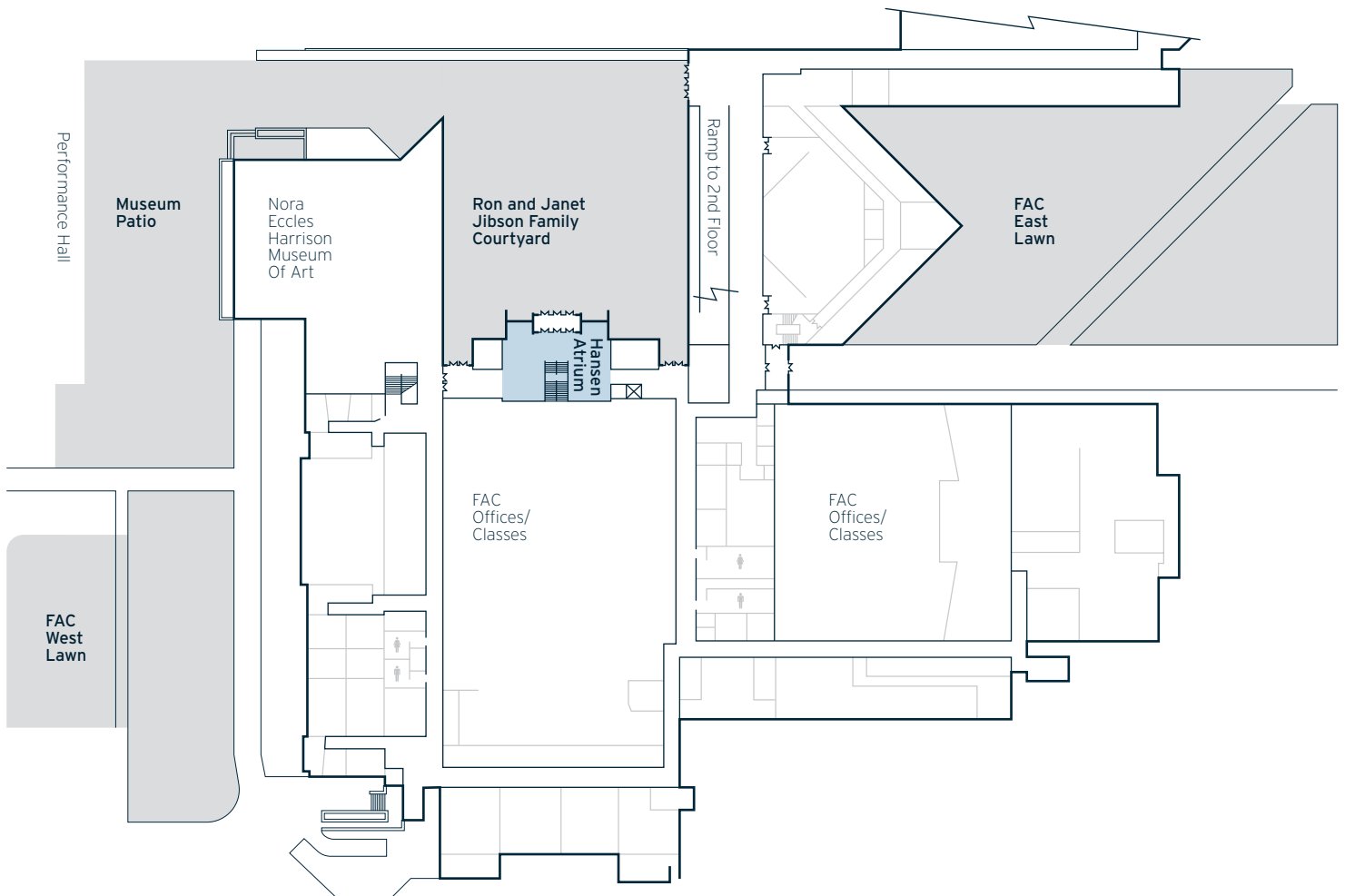
CAPACITY				
EVENT SPACE	TOTAL SQ FT	DIMENSION L X W	CEILING HEIGHT	HOUSE
Caine Room	1700	-	-	50

PRICING				
EVENT SPACE	COMMERCIAL	LOCAL COMMERCIAL	NON PROFIT	USU
Caine Room	\$60	\$60	\$60	\$40

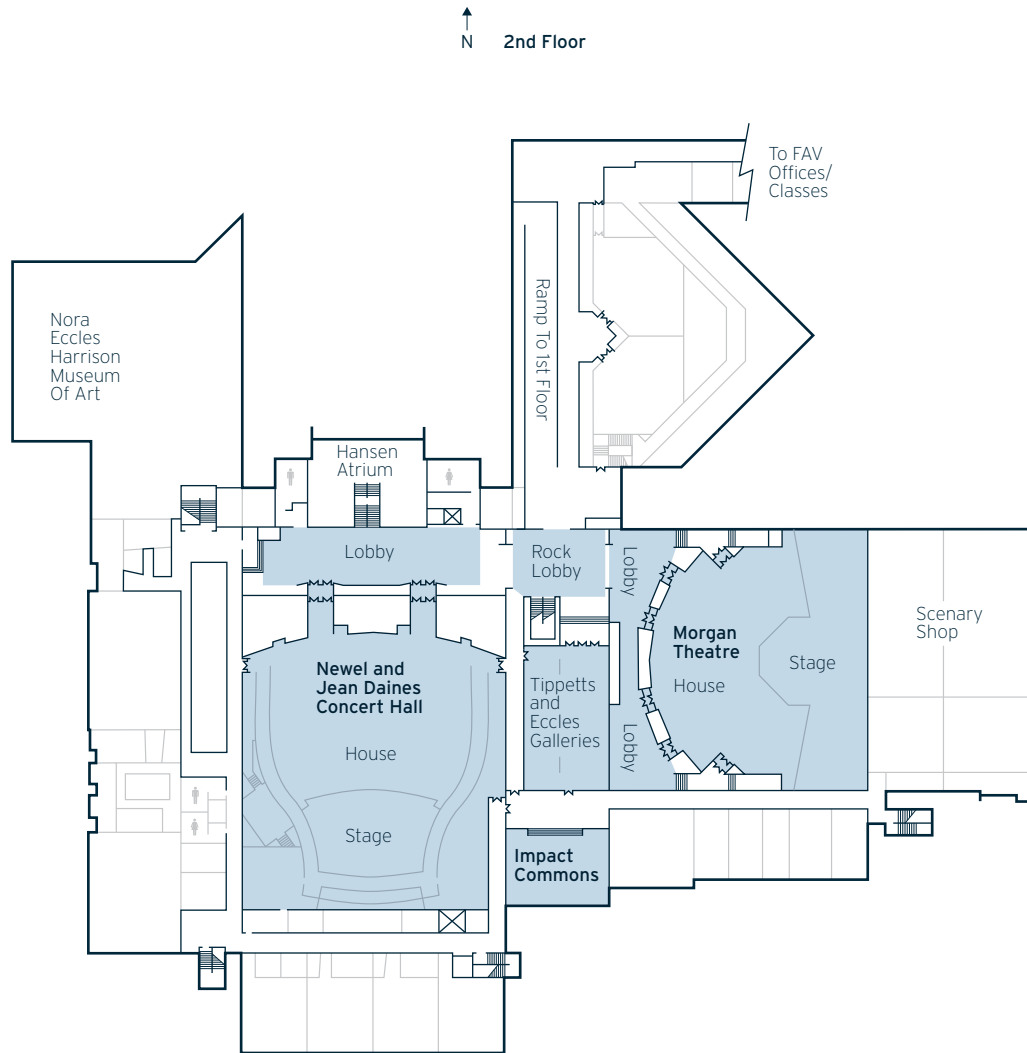
Procedures and rates are subject to change without notice.
 Utah State University reserves the right to alter services and fees based on the size and scope of the event.
 For scheduling and additional pricing information, please contact Sara Grove, CCA Production Services Scheduling Coordinator, at 435-797-3040 or sara.grove@usu.edu.

↑
N 1st Floor and Outside

To FAV
Offices/
Classes



Procedures and rates are subject to change without notice.
Utah State University reserves the right to alter services and fees based on the size and scope of the event.
For scheduling and additional pricing information, please contact Sara Grove, CCA Production Services Scheduling Coordinator, at 435-797-3040 or sara.grove@usu.edu.



Procedures and rates are subject to change without notice.
Utah State University reserves the right to alter services and fees based on the size and scope of the event.
For scheduling and additional pricing information, please contact Sara Grove, CCA Production Services Scheduling Coordinator, at 435-797-3040 or sara.grove@usu.edu.

CAPACITY					
EVENT SPACE	TOTAL SQ FT	DIMENSION L X W	CEILING HEIGHT	HOUSE (THEATRE)	RECEPTION
FAC East Lawn	-	-	-	-	-
FAC West Lawn	-	-	-	-	-
Hansen Atrium	2245	-	-	-	25
Impact Commons	2490	-	-	-	100
Morgan Theatre House	5969	-	-	670	-
Morgan Theatre Lobby	3484	-	-	-	50
Morgan Theatre Stage	4415	-	-	-	-
Museum Patio	134000	-	-	-	-
Newel and Jean Daines Concert Hall House	13805	-	-	1742	-
Newel and Jean Daines Concert Hall Lobby	5960	-	-	-	75
Newel and Jean Daines Concert Hall Stage	2113	-	-	-	-
Rock Lobby	178	-	-	-	50
Ron and Janet Jibson Family Courtyard	14451	-	-	-	500
Tippetts and Eccles Galleries	2496	-	-	-	-

PRICING				
EVENT SPACE	COMMERCIAL	LOCAL COMMERCIAL	NON PROFIT	USU
FAC East Lawn	-	-	-	-
FAC West Lawn	-	-	-	-
Hansen Atrium	\$300	\$225	\$195	\$90
Impact Commons	\$500	\$375	\$325	\$150
Morgan Theatre House	\$800	\$600	\$520	\$240
Morgan Theatre Lobby	\$300	\$225	\$195	\$90
Museum Patio	-	-	-	-
Newel and Jean Daines Concert Hall House	\$1800	\$1350	\$1170	\$540
Newel and Jean Daines Concert Hall Lobby	\$300	\$225	\$195	\$90
Rock Lobby	\$300	\$225	\$195	\$90
Ron and Janet Jibson Family Courtyard	\$500	\$375	\$325	\$150
Tippetts and Eccles Galleries	\$650	\$505	\$475	\$300